

**INSTRUMENT APPROACH CHART**

**AERODROME ELEV 435  
HEIGHTS RELATED TO  
THR RWY 29 - ELEV 387**



**EAST LONDON**

(Cat A - D) **VOR Z Rwy 29**

**FAEL**

BEARINGS ARE MAGNETIC  
ALTITUDES, ELEVATIONS  
AND HEIGHTS IN FEET.  
DISTANCES IN NM.

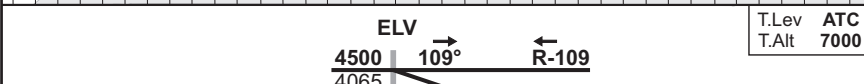
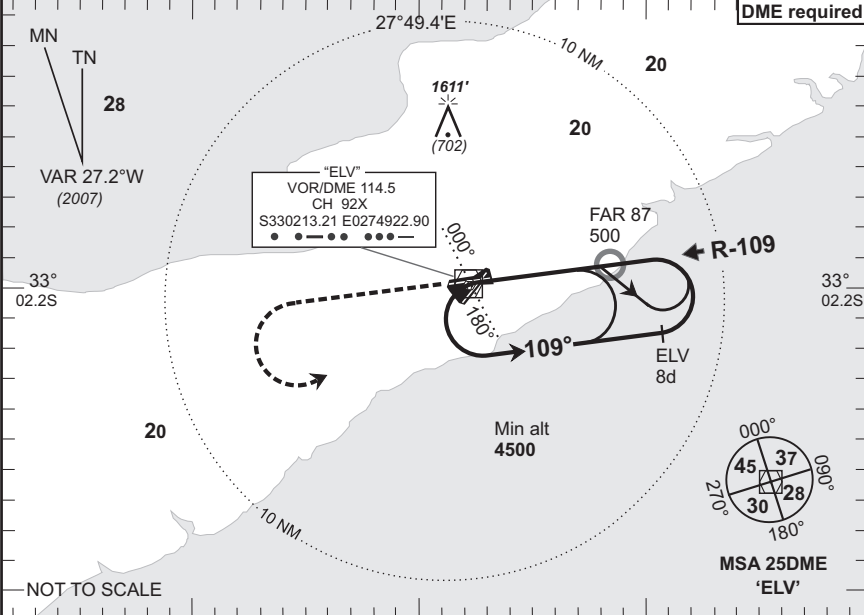
**EAST LONDON Approach  
120.1**

**Tower  
118.3**

**Apron  
122.65**

**ATIS  
126.65**

**VOR-02  
EFF  
03 Jul 08**



Climb to **4500 FT ALT**, continue to "ELV" then R-289 "ELV" outbound until passing 3000 FT ALT or 6.5 DME, whichever first. Then left to "ELV" and hold or as directed by ATC.



1. Initial approach altitude **4500** or higher MSA.
2. Procedure turn approach applicable only within 30° of the outbound heading. Use phraseology "Request procedure turn approach".
3. RoD computes at 3° angle of descent.
4. Circle to land at the discretion of the pilot in command.
5. OCH @ min 5% climb gradient Cat A - D 423.

| OCA/H       |          |          |          |          | "ELV" 5.4d - THR |            |            |            |           |      |      |
|-------------|----------|----------|----------|----------|------------------|------------|------------|------------|-----------|------|------|
| Cat of ACFT | A        | B        | C        | D        | Speed            | Kt         | 80         | 100        | 120       | 140  | 160  |
| Straight    | 810(423) | 810(423) | 810(423) | 810(423) | Time             | M:s        | 3:41       | 2:57       | 2:27      | 2:06 | 1:50 |
| -in         |          |          |          |          | Rate of Descent  | Fpm        | 420        | 530        | 640       | 740  | 850  |
| Approach    |          |          |          |          | "ELV" VOR/DME    | 5.4d       | 5d         | 4d         | 3d        |      |      |
| Circling    |          |          |          |          | Advisory Alt/Hgt | 2000(1613) | 1870(1483) | 1550(1163) | 1230(843) |      |      |

Rev: VAR & FAD-190 Removed WGS-84